

# Installation Manual

**KomiBright<sup>®</sup>**

C25RJ Reverse Osmosis System



We congratulate you on your decision and greet you as a member of the KomiBright community who are uncompromising demands on drinking water. The latest generation of remarkable and innovative reverse osmosis system has been selected as you bought KomiBright water purifiers. Patented technology, superior quality and unique design will keep you happy in your life. Each item is subject to strict quality and function inspection before delivery, thus there may be some water remaining in the system.

Please read the installation instructions carefully so that you can perform all the necessary work steps optimally.

## Category

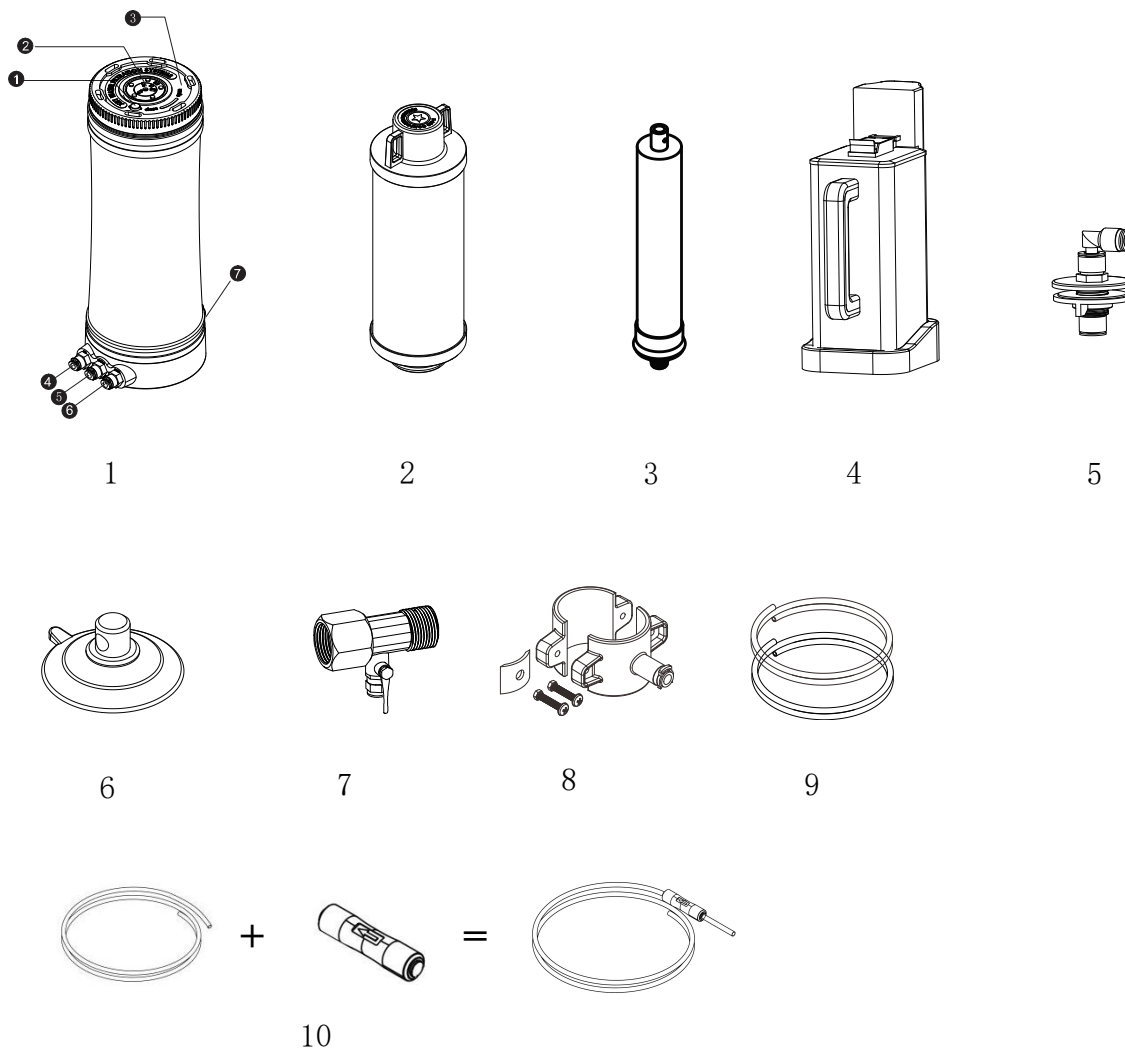
1. Unpacking.....	2
2. Product Contents.....	2
3. Overall Installation Drawing.....	3
4. Required Tools.....	3
5. Quick Fitting Connecting.....	3
6. RO Membrane & Combo Cartridge Filter Usage.....	4
7. PE Tube Holder、 Feed Water Adapter Connecting.....	4
8. Drain Saddle Connecting.....	4
9. First Commissioning.....	5
10. Replace Combo Filter.....	5
11. Lifespan of Filters.....	5
12. Technical Data.....	6
13. Troubleshooting.....	6
14. Warranty.....	7

## 1. Unpacking

Take out all the packaging materials. Make sure there is no external damage to the reverse osmosis system.

## 2. Product Contents

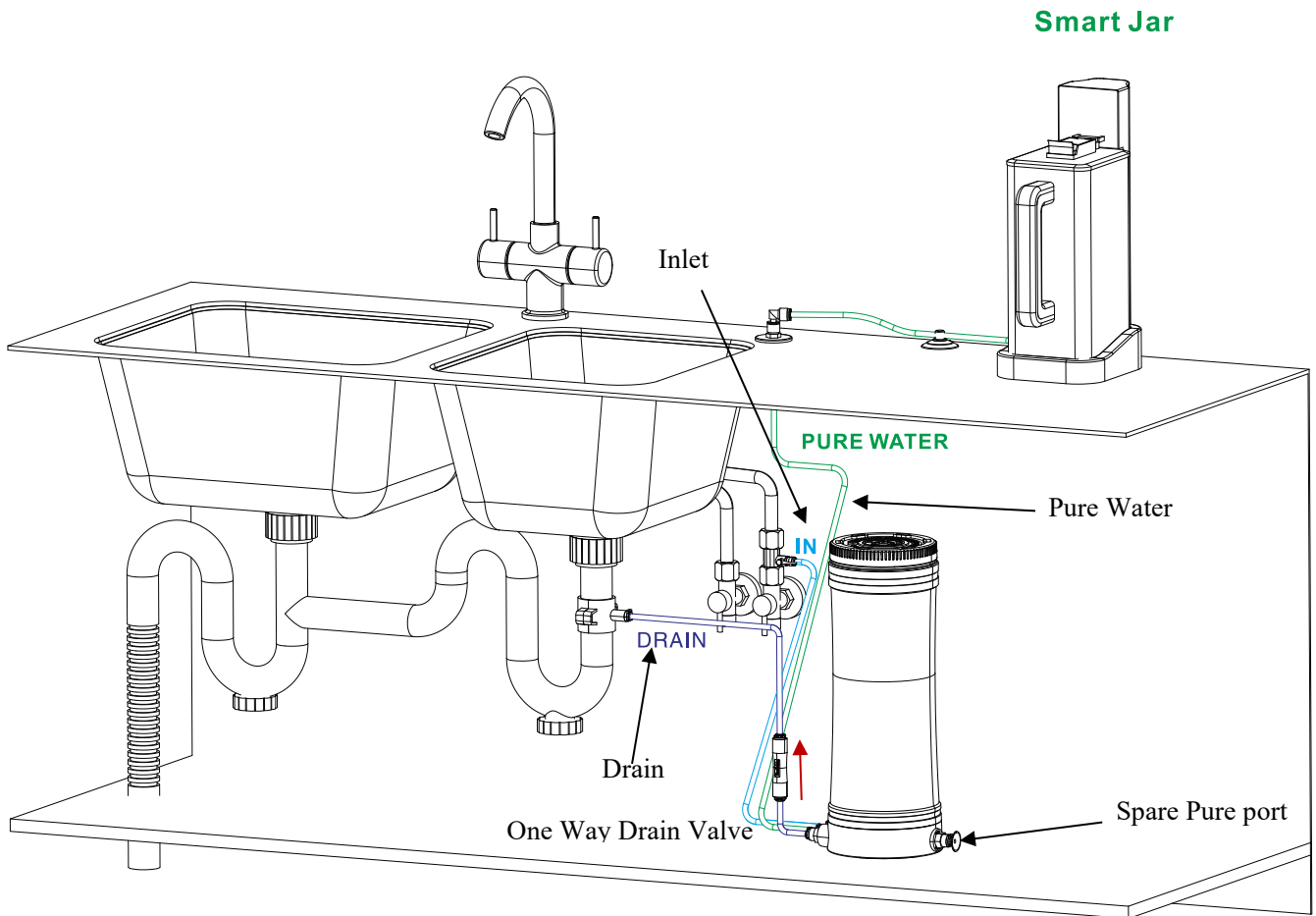
(Subject to final receipt of goods)



### 1. Reverse Osmosis System

- ❶ Air Release Valve ( ! ! First installation or filters replacement need air release)
  - ❷ Date Ring
  - ❸ Lid
  - ❹ Inlet Port
  - ❺ Pure Port
  - ❻ Out Port
  - ❼ Spare Pure Port
2. Combo Filter ( it has been loaded into the housing for transportation reason)
  3. RO Membrane
  4. Smart Jar
  5. PE Tube Holder
  6. PVC Sucker
  7. Integrated Adapter 3/8"
  8. Drain Saddle (optional)
  9. PE Tube x 1/4 "(Blue) x 3.0 m (please cut it in half, 1.5m × 1.5m)
  10. PE Tube x 1/4 "(Yellow) x 1.5 m + One Way Drain Valve

### 3. Overall Installation Drawing



### 4. Required Tools

For installation, you need the following tools and materials:

- Wrench
- Scissors
- Power Drill
- Drill Bits 6mm / 12mm
- Teflon Tape

### 5. Quick Fitting Connecting

This system is equipped with quick fitting connecting. With the quick fitting connecting, you can easily and safely connect the PE tubes. Plug the tubes into the counterparts until you feel a click. The click occurs only when the tube is correctly fastened in the anchoring device.

As show below:

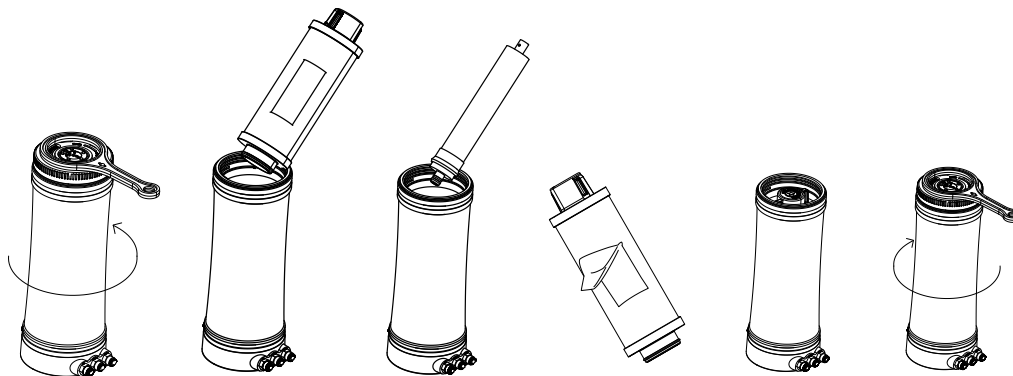
If you want to remove the tube again, you must, at first, remove the retaining clip.

And then, at the junction, you will see a small white plastic ring. Press the plastic ring evenly then pull out the tube.



## 6. RO Membrane & Combo Cartridge Filter Usage

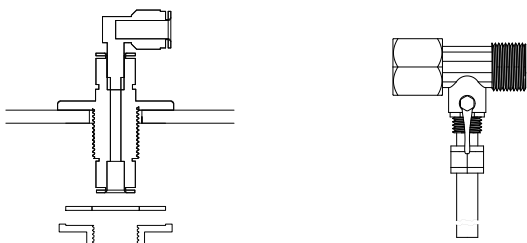
- 6.1 Make sure the spare parts are complete.
  - 6.2 Open the top cover and remove the combo cartridge filter from housing
  - 6.3 Take up the RO membrane and insert the side which has black rubber seal into the base circular slot.
  - 6.4 Remove the film on the surface of the combo cartridge filter before use, and then put it back into the housing.
  - 6.5 Tighten the top cover clockwise.
  - 6.6 Refer to Overall Installation Drawing to contact the PE tubes
- \* Note: It is the yellow label side yellow tube shall plug into the drain port. There is a flow restrictor inside this tube end.**



## 7. PE Tube Holder, Feed Water Adapter Connecting

- 7.1 Please confirm the appropriate installation position before install PE tube holder, which suitable for the aperture of 18~30mm flat face. Install the PE tube holder according to the diagram below.
- 7.2 One end of blue PE tube is connected with the feed water adapter through the nut, and the other end is connected to the inlet port of the machine (IN)

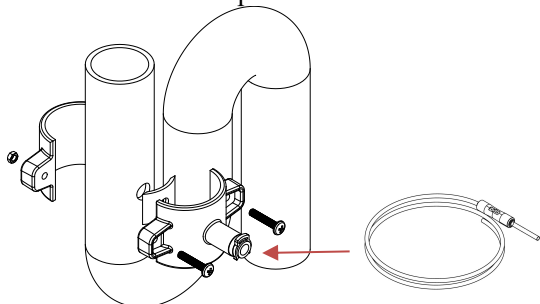
**Note: Please close the adapter's ball valve if you are away from home or on vacation for a long time.**



## 8. Drain Saddle Connecting

Choose the best installation location before installation and, usually, the best installation location is in the upper area of the sink drain pipe. Do not install in the corner area of the pipe!

Please follow the steps below:



- Drill a 6mm hole on the sink drain pipe.
- Seal foam rubber around the hole.
- Fix together the two clamp rings (tighten with two screws).
- Insert the drain water tube into the port of the 1/4" clamp.
- Be sure the arrow direction of one way drain valve is right.  
**(The arrow symbol must point outward)**

## 9. First Commissioning

- 9.1 Check all tubing lines again before supplying water.  
The tubing must be laid without kinking, twisting or bending.  
Then turn on the water supply and check all connections for leaks.  
Note: If there is water leakage or installation problems, please refer to troubleshooting or call local service center.
- 9.2 Press the red air release valve on the cover to release excess air from the housing until water flows out.
- 9.3 Turn on the inlet valve of the smart jar, then pour away the first pot of water when the smart jar is full, and the subsequent pure water can be drunk.

**Note:**

There are white bubbles in pure water are normal and harmless to the body.

Please confirm whether the water inlet tube is correctly installed.

Please don't close the drain port, which may cause system abnormality and shorten RO membrane life.



## 10. Replace Combo Filter

- 7.1 Close the integrated feed water adapter and then open the top cover.
- 7.2 Remove the old combo filter and RO membrane to change.

## 11. Lifespan of Filters

To this system, you need to replace the combo filter and RO membrane periodically.

Code	Item	Replacement cycle	Suggest
LXL-A0001	RO Membrane	Max. every 12 months	every 12~16 months
LXL-A0002	Combo Filter (F210)	Max. every 12 months	every 8~14 months

※This is the average empirical value estimated in normal use under GB5749-2006 municipal tap water conditions, for reference only.

## 12. Technical Data

- Product Model: C25RH
- Product Size:  $\phi 140 * \phi 190 * 375\text{mm}$
- Product Weight: 3KG
- The volume of Smart Jar: 2.5L
- Inlet Water Source: municipal water
- Inlet Water Temperature: 8~35°C
- Min. required inlet pressure: 21~70PSI (1.5~5 bar)
- Max. flow rate of daily: 200L (2kgf/cm<sup>2</sup>、25°C)
- The flow rate of filtered PURE water:  $\geq 150\text{ml/min}$  (2kgf/cm<sup>2</sup>、25°C)
- Pure to Drain: 1 : (1~1.5)

## 13. Troubleshooting

This reverse osmosis system undergoes multiple quality and functional checks prior to shipment. If you still find a problem, check the possible causes and their remedies. However, if you do not find a solution, please contact your local distributor.

Detection / Error	Check	Check Points	Solutions
No or few RO water	If water supply is normal	If the control valve of smart jar is turned on	Turn on the feed water adapter and control valve
		If water pressure less than 2.5 Bar	Booster pump is required
	Combo Filter	If plastic wrap has not been removed	Please remove as instructed
		If filter blocked by impurities	Please replace filter
		If RO Membrane blocked	Please replace RO membrane
	Tubing	If tubes be bent badly	Smooth or replace the tubes
	Drain Tube	If the drain tube is contacted wrong	Adjust yellow label end to contact
Clean water No or flow rate is low	No problems so far	If filter blocked by impurities	Please replace filter
Water leaking	From the bottom of machine	Check and make sure the leaking is from the bottom	Turn off the water supply then contact service center
	Leaking from quick-fitting connectors	Check leaking location	Fasten or replace connectors if necessary
	Tube broken	Check tube broke location	Replace tubes and then check the pressure gauge to make sure the operation pressure is normal
	Leaking from smart jar	If the smart jar is placed flat	Please place the smart jar flat

## 14. Warranty

All warranty commitments must be valid in accordance with the operation and maintenance instructions. The term is one year from goods received by importers.

All claim for warranty will be rendered null and void in the following situations:

- Improper commissioning, unfit operation and maintenance.
- Delay or forget to replace the filter and RO membrane regularly.
- Use other brand filter or RO membrane of poor quality.
- System damaged, such as frost, improper installation or maintenance.
- Water source above **800 ppm TDS**, and not in line with GB5749-2006.

SHANGHAI CONJOIN WATER PURIFICATION TECHNOLOGY CO., LTD.  
 ADD: F.202, Bldg. B ( Der-Bi-E), No.6, Hua Zhong Rd., Min-Hang Dist., Shanghai  
 TEL: 400-068-0889/+86-021-3461-0380  
[www.komibright.com](http://www.komibright.com)  
[www.komibright.com.tw](http://www.komibright.com.tw)